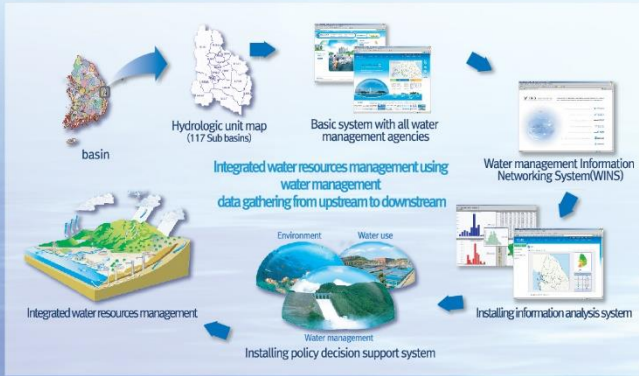


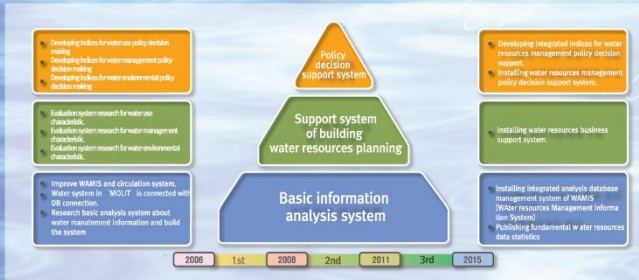
Concept map for water resources informationization

The main objective is setting up a policy decision support system based on not only utilizing diffused water-related data but also collecting and analysing various water resources information



Master Plan for water resources informationization

Progression by dividing it into three areas (Information analysis systems, Business support system, Policy decision support system) for accumulated reliable data



Installing water resources information systems for data gathering, data management and policy decision supporting



For future, For worldwide Installing national water resources information system

Creative, Clean, Communicative

For future,
For worldwide
Installing national water resources information system

For future, For worldwide
Installing national water resources information system

www.wamis.go.kr

www.wins.go.kr

www.river.go.kr

WAMIS | WINS | RIMGIS

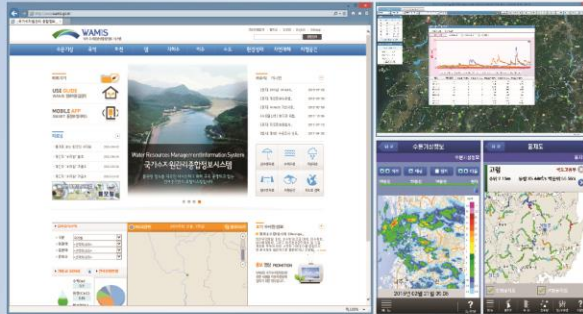


328 Dongjakdaero, Seocho-Gu, Seoul, 137-049 Korea
TEL : 02)590-9999 FAX : 02)590-9989

Water Resources Management Information System

What is Water resources Management Information System(WAMIS)?

The portal system is providing information about collected, processed and analyzed water resource data which are distributed nationwide agencies.



Service Items

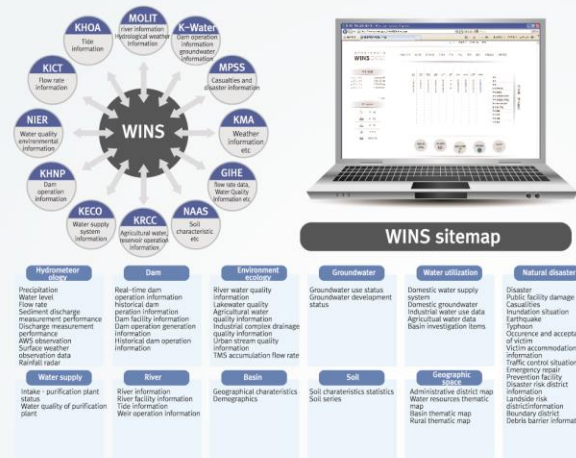
- Provides 300 basic data items divided into 10 fields such as hydrometeorology, basin, river, dam, ground water and drinking water etc.
- Search services on water-related information by local government base(256), by hydrologic unit maps(117 basins) and by rivers (national and regional rivers).

Menu	Service Items
Hydrometeorological information	precipitation, stage, weather, discharge, sediment discharge, flow duration analysis
Basin information	basin characteristics, human and social, basin resources, land development
River information	river transverse data, river rehabilitation rate, river facilities, river master plan report
Dam information	hydrologic information, quality information, stage-storage relation curve of dam
Groundwater information	groundwater use, alluvial /bedrock groundwater, groundwater quality
Water use information	amount of water use, domestic water, industrial water, agricultural water, water right
Water supply information	water supply facilities, intakes/purification performance, purification plant performance
Environmental ecology information	water quality, pollution load amount, environmental infrastructure, riverside spatial assessment, ecological environment
Natural disaster information	flood damage, inundation area, flood risk area, drought
Geo-spatial information	hydrologic unit map, water resources thematic map, basin thematic map, analysis thematic map

Water Management Information Networking System

What is Water Management Information Networking System(WINS)?

Water management information common utilization system provides water information created by each water-related organizations by on-line and one-stop.



Service Items

- Water-related information which is generated by water-related government organizations and based in National water management information standards (2004) is cooperatively used through WINS. In the future, WINS will be expanded the target organizations and common utilization items to construct the international water-related information distribution system such as OECD and GEOSS etc.



River Management Geographic Information System

What is River Management Geographic Information System(RIMGIS)?

The total river information system – which constructs the spatial and relevant information on national rivers – designed to manage rivers efficiently and systematically and to provide the services to users



Service Items

National river digital map Master plan report on rivers

- Map services that provide users with national rivers' spatial and relevant information
 - Display basins, rivers and river areas
 - Display river banks and river facilities
- Provide the master plan report on national and local rivers
 - Information by water basin/ administrative agency / administrative district
 - Information by establishment years / river class / river name
 - The computerized status of the master plan report on rivers

Flood Inundation map River administration work

- Provide basic data and digital map services to establish efficient flood control measures
 - Flood inundation maps for national rivers
 - Displays image- and GIS-based flood inundation maps
 - Basic data to craft disaster information maps to manage insurances against flood and wind damages
- The service of providing river management information to support the efficient administration work for national rivers
 - River management books
 - The information on drawings and cross sections
 - Inquire the permission for river occupation
 - Manage detailed information on river facilities

River history management River facility management Guideline on System computerization

- Manages and provides statistics on national and local rivers, the overview of Korea's rivers, and river history information
 - River statistics
 - The overview of Korea's rivers
 - River designation history
 - The master plan history for rivers
 - The river facility history
 - The lists of river facilities
- Providing guidelines for standards on computerizing river facility management books
 - Guidelines for standards on computerizing flood inundation maps
 - Guidelines for standards on the outputs of the master plan of river (reports, analysis results, spatial information, etc.)