

EPSON RC+ 7.3.0 Release Notes

November 18, 2016

Thank you for using EPSON RC+ 7.3.0. This document contains the latest information for this release. Please read before using this software.

| | |
|--|---|
| DOCUMENTATION | 2 |
| GETTING STARTED | 2 |
| WHAT'S NEW IN VERSION 7.3.0 | 2 |
| WHAT'S FIXED IN VERSION 7.3.0 | 3 |
| VISION GUIDE 7.0 | 4 |
| TROUBLESHOOTING GIGE CAMERA DRIVER INSTALLATION..... | 4 |

Documentation

All RC+ manuals are in PDF format and are installed on the PC hard disk. These manuals are accessible from the EPSON RC+ 7.0 environment Help menu.

Getting Started

Read the Getting Started chapter in the EPSON RC+ 7.0 User's Guide. This chapter will refer you to the RC700 Controller manual Installation chapter. This contains information for initial connections and start up.

What's New in version 7.3.0

Vision Guide

1. Added Flow Chart display to the Vision Guide window.
2. Replaced tabs on the Vision Guide window for sequence, objects, and calibrations with a tree view.
3. Added ability to display multiple video images on the Run window and Operator window.
4. Added Calibration Wizard.
5. Added AutoCamPoints for robot camera calibrations. The camera positions are automatically generated.
6. Added AutoReference for robot mobile calibrations. Finds the reference point automatically.
7. Added Arm Wizard to automatically detect a camera arm for Scara robots.
8. Added ability to detect a camera tool or an end effector tool without calibration in the Tool Wizard.
9. Added ability to detect a robot local using a calibration plate in the Local Wizard.
10. Added CallImageSize result for Calibration.
11. Added FillHoles property for Blob and ImageOp Binarize.
12. Added SkewFitEnable property, SkewDirection result, and SkewRatio result to Correlation and Geometric.
13. Added Scale result for Correlation.
14. Added AngleOffset property for Correlation and Geometric.

API

15. Support multiple simultaneous video displays.

Simulator

16. Supported XVL and 2D DXF format in CAD import function.
17. Added ability to save CAD object as XVL format.
18. Added ability to render edge of CAD object.
19. Added ability to render semi-transparent CAD and Hand objects.
20. Improved Path rendering. Render of the current Tool and Line style, size and color changes are now possible.
21. Improved Point rendering. Render of orientation and rotation direction, radius and color changes are now possible.
22. Improved Axis rendering. Render of axis name and rotation direction, length

- changes are now possible.
23. In the collision detection, render of collision point, color changes are now possible.
 24. Improved CAD to Point function. Exporting point data from any edges on the CAD object is now available.
 25. Moving, rotating and Jogging of robot or object with only the mouse operation.

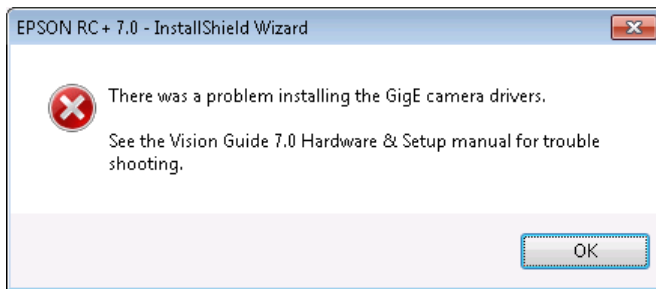
What's Fixed in version 7.3.0

1. Fixed a problem for step jogging the robot. Sometimes the jogging continued even though the mouse was released. This mainly occurred for virtual controllers, but rarely occurred for a real controller.
2. Fixed a problem for Robot Manager when closing and points needed to be saved. If the current page was not Jog & Teach or Points, then the points were not being saved.
3. Now if Robot Manager is opened and the project needs to be changed in the controller, program and include files are also sent to the controller in addition to the point files. This fixes a problem where if the project was imported from the controller, there were no program files to import. Also, if there are no program files in the controller, then the project cannot be imported from the controller.

Vision Guide 7.0

Troubleshooting GigE Camera Driver Installation

The following message may be displayed after the installation of EPSON RC+ 7.0 GigE camera drivers.

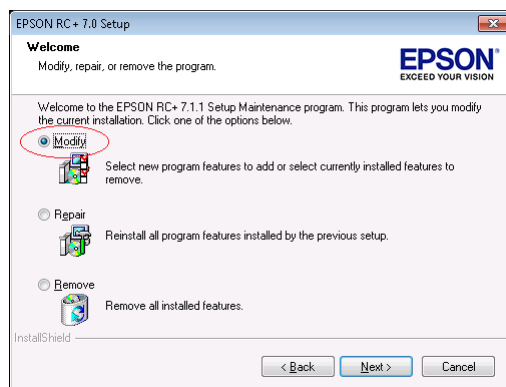


In this case, please refer to the following sections in the Vision Guide 7.0 Hardware & Setup manual:

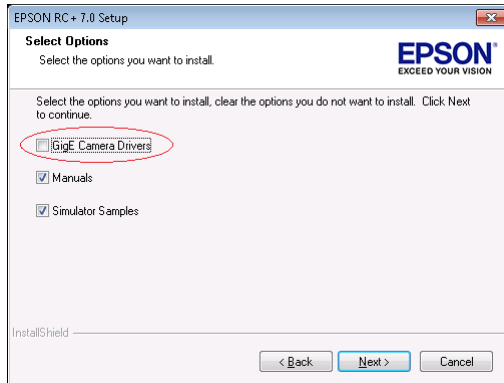
- Setup
 - 2 Software Configuration
 - 2.2 Network Configuration of Vision PC
 - 2.2.1 Network Driver Setting Confirmation
 - 2.2.2 Filter Driver Setting
 - 6 Trouble Shooting
 - “FilterDriver” Installation Error Occurred

After make the recommended changes, you will need to re-install the GigE camera drivers. Perform the following steps:

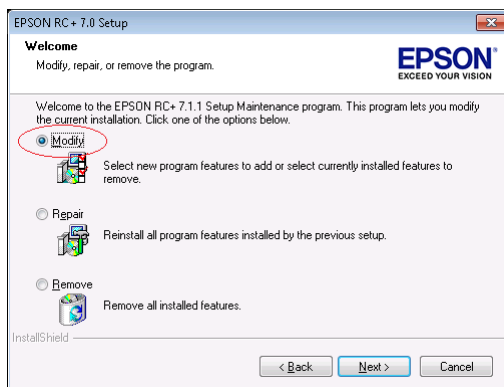
1. Start the EPSON RC+ 7.0 installer.
2. Select Modify, then click Next.



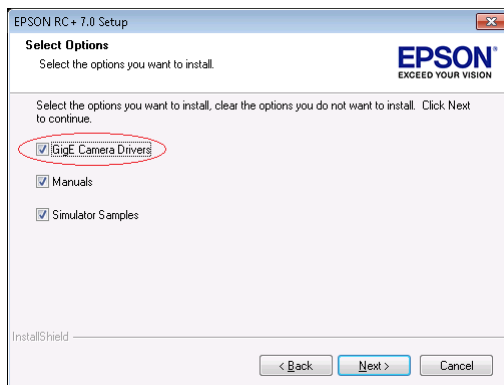
3. Uncheck GigE Camera Drivers and click Next.



4. Click Next and finish the installation.
5. Start the EPSON RC+ 7.0 installer.
6. Select Modify.



7. Check GigE Camera Drivers and click Next.



8. Click Next and finish the installation.