

EPSON RC+ 7.2.1 Release Notes

June 15, 2016

Thank you for using EPSON RC+ 7.2.1. This document contains the latest information for this release. Please read before using this software.

DOCUMENTATION	2
GETTING STARTED	2
WHAT'S FIXED IN VERSION 7.2.1	2
VISION GUIDE 7.0	3
TROUBLESHOOTING GIGE CAMERA DRIVER INSTALLATION.....	3

Documentation

All RC+ manuals are in PDF format and are installed on the PC hard disk. These manuals are accessible from the EPSON RC+ 7.0 environment Help menu.

Getting Started

Read the Getting Started chapter in the EPSON RC+ 7.0 User's Guide. This chapter will refer you to the RC700 Controller manual Installation chapter. This contains information for initial connections and start up.

What's Fixed in version 7.2.1

General

1. Fixed singularity handling for N2 series robots used in virtual controllers.
2. Fixed I/O Label Editor and User Error Editor for Japanese labels.
3. Fixed insert mode for the program editor. The cursor size was incorrect.
4. Fixed a problem for I/O Monitor where if Byte or Word was selected and the window was re-opened, the grid showed the information for Bit.
5. Fixed a problem where STEP, IGES and DXF files in a path which contains multi-byte characters (e.g. Japanese) were not able to be imported into the Simulator.

API

6. Fixed a problem for API when OperationMode is Program, and a project build executes from an API method. The API program could hang.

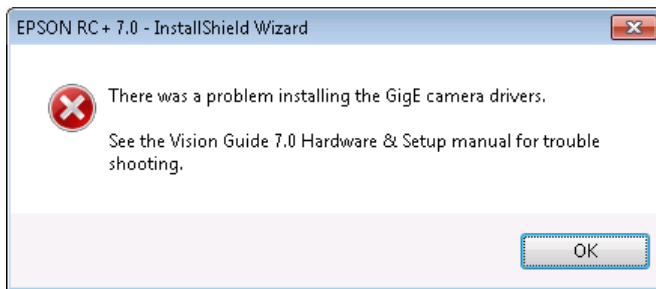
GUI Builder

7. Fixed a problem where a hang up could occur after RunDialog executes from a GUI Builder event when using nested dialogs.
8. Fixed a problem where some system windows for GShow did not display in the foreground when running in Program mode.
9. Fixed a problem for GUI Builder VideoBox. The video is restored after another form using video is closed.

Vision Guide 7.0

Troubleshooting GigE Camera Driver Installation

The following message may be displayed after the installation of EPSON RC+ 7.0 GigE camera drivers.

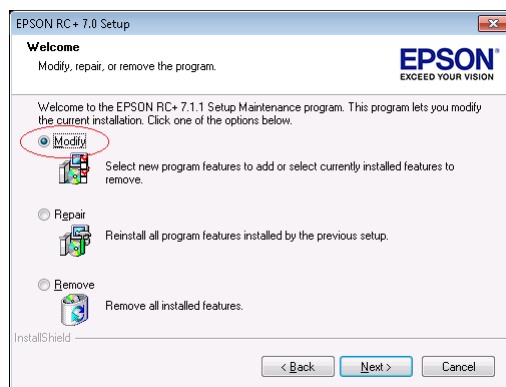


In this case, please refer to the following sections in the Vision Guide 7.0 Hardware & Setup manual:

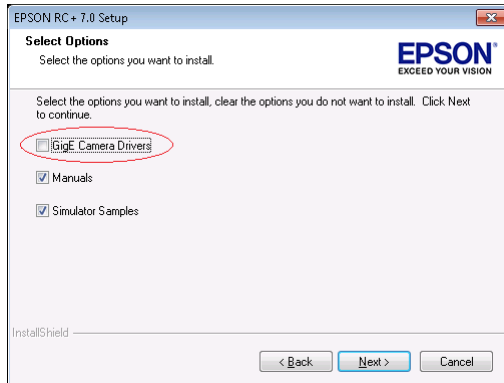
- Setup
 - 2 Software Configuration
 - 2.2 Network Configuration of Vision PC
 - 2.2.1 Network Driver Setting Confirmation
 - 2.2.2 Filter Driver Setting
 - 6 Trouble Shooting
 - “FilterDriver” Installation Error Occurred

After make the recommended changes, you will need to re-install the GigE camera drivers. Perform the following steps:

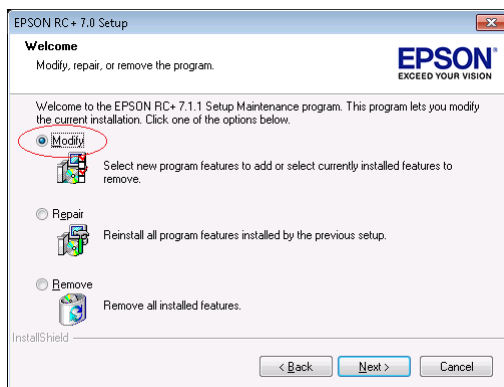
1. Start the EPSON RC+ 7.0 installer.
2. Select Modify, then click Next.



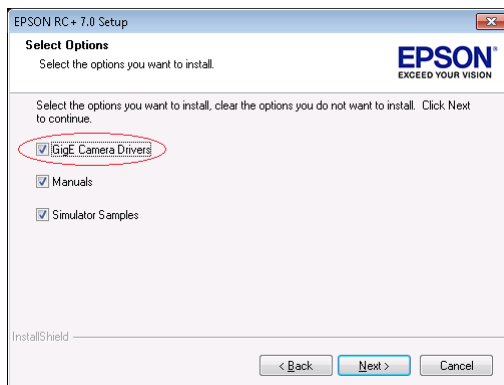
3. Uncheck GigE Camera Drivers and click Next.



4. Click Next and finish the installation.
5. Start the EPSON RC+ 7.0 installer.
6. Select Modify.



7. Check GigE Camera Drivers and click Next.



8. Click Next and finish the installation.