

EPSON RC+ 7.2.0 Release Notes

March 2, 2016

Thank you for using EPSON RC+ 7.2.0. This document contains the latest information for this release. Please read before using this software.

DOCUMENTATION	2
GETTING STARTED	2
WHAT'S NEW IN VERSION 7.2.0	2
WHAT'S FIXED IN VERSION 7.2.0	2
VISION GUIDE 7.0	4
TROUBLESHOOTING GIGE CAMERA DRIVER INSTALLATION.....	4

Documentation

All RC+ manuals are in PDF format and are installed on the PC hard disk. These manuals are accessible from the EPSON RC+ 7.0 environment Help menu.

Getting Started

Read the Getting Started chapter in the EPSON RC+ 7.0 User's Guide. This chapter will refer you to the RC700 Controller manual Installation chapter. This contains information for initial connections and start up.

What's New in version 7.2.0

1. Added support for Windows 10.
2. Added support for N2 series robots.
3. Added Shift Operation for ImageOp.
4. Added EdgeSort for Edge, Arc Finder, Arc Inspector, Line Finder, Line Inspector.
5. Added support for controller health information.
6. Added support for Force Guide 7.0.

What's Fixed in version 7.2.0

General

1. Fixed Go To Definition for point labels.
2. Fixed a problem for RunDialog for Robot Manager. If a Tool statement was used immediately before calling RunDialog, an exception occurred.
3. Added AvgSpeed, AvgSpeedClear, PeakSpeed, and PeakSpeedClear statements and functions for the SPEL+ language.
4. Fixed a problem for Robot Manager Jog & Teach where if the robot was switched when another Robot Manager page was opened, and robot motors were on, then the current position was not updated when you switched to the Jog & Teach page.
5. Fixed a problem where sometimes the project synchronization dialog would appear during connection with the controller, but should not have opened.
6. Fixed a problem for Simulator. After a Base statement was executed, the display of the coordinate systems, Points, Pallets and Planes depending on Local coordinates was not updated.
7. Improved the communication performance of Virtual Controller. Now connect time and I/O control time including file input and output are shortened.

Vision Guide

8. Fixed problems for Point when used with PointType = Intersection for PC Vision. Sometimes the Point location was not correct. Also, if the intersection was outside the image, the Point was not marked as not found.
9. Fixed a problem where an ImageOp was sometimes run too soon as a dependent object when the Run Object button was used.
10. Fixed line extensions for Line and Line Finder. Sometimes the angle of the extension was slightly incorrect.

11. Fixed Point for intersection – if the intersection was not found, the Point object was not failed.
12. Fixed a problem importing a vision sequence that has Blob objects.
13. Fixed a problem for multiple projects in Compact Vision. The project numbers for cameras in Project | Properties | Vision were not being maintained correctly.
14. Fixed exceptions for ShowModel and Delete Object when using a session of RC+ other than the first session.
15. Now during Standalone and FixedDownward calibrations when one step is used for the calibration mark results, NumberOfResults is checked to be 9 or greater, instead of NumberToFind.
16. Included CV firmware 2.3.2.0. See the revision notes in `\EpsonRC70\Vision\Firmware\CompactVision`.
17. Fixed a problem where if RC+ was maximized, and the Vision Guide window was maximized, and video was displayed on the Run window, sometimes after running the program, when you switched to the Vision Guide window, you would get exceptions when trying to run a sequence or object.
18. The lists for calibration properties TargetSequence, UpwardSequence, and DistCorrectTargetSeq are now sorted alphabetically.
19. Fixed a problem for re-teaching Geometric or Correlation objects where the model is located inside an ImageOp window.

API

20. Fixed a problem where if VRun was executed from the API for a CV camera, there was sometimes a 1.5 second delay.
21. Fixed a problem for VB Guide GetVar and SetVar when used with multidimensional arrays.
22. Fixed NoProjectSync property. The API application would hang when NoProjectSync was set. Also, now when NoProjectSync = False, and VCreate functions are called from the API, the project is not automatically built when GetVar or SetVar are called.

GUI Builder

23. Fixed a problem for GUI Builder where the LED controls or Text controls using variables were not updated when a form was not opened at startup.
24. Fixed a problem for RunDialog. When running in program mode, the dialog was opened behind the GUI Builder form.

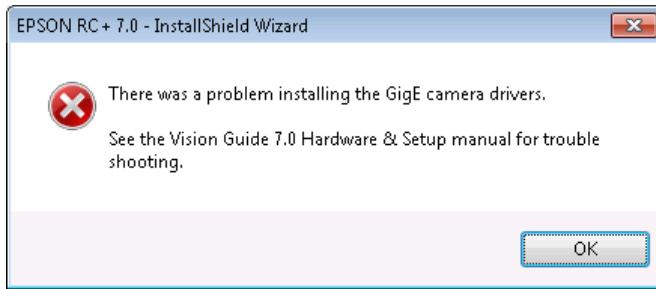
Security

25. Fixed a problem where when the user was logged out and then logged in as another user, the security auditing was not being recorded for that user.

Vision Guide 7.0

Troubleshooting GigE Camera Driver Installation

The following message may be displayed after the installation of EPSON RC+ 7.0 GigE camera drivers.

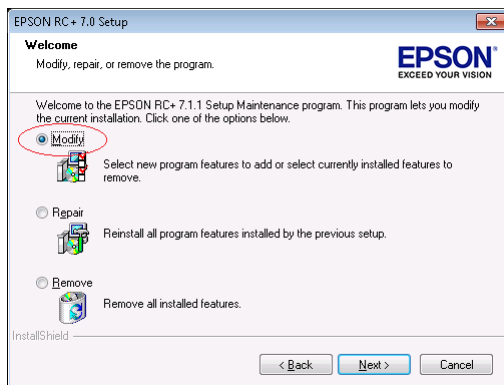


In this case, please refer to the following sections in the Vision Guide 7.0 Hardware & Setup manual:

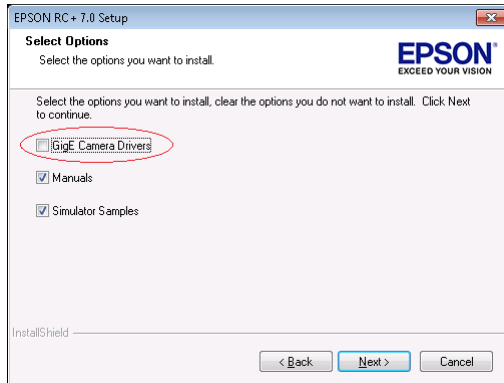
- Setup
 - 2 Software Configuration
 - 2.2 Network Configuration of Vision PC
 - 2.2.1 Network Driver Setting Confirmation
 - 2.2.2 Filter Driver Setting
 - 6 Trouble Shooting
 - “FilterDriver” Installation Error Occurred

After make the recommended changes, you will need to re-install the GigE camera drivers. Perform the following steps:

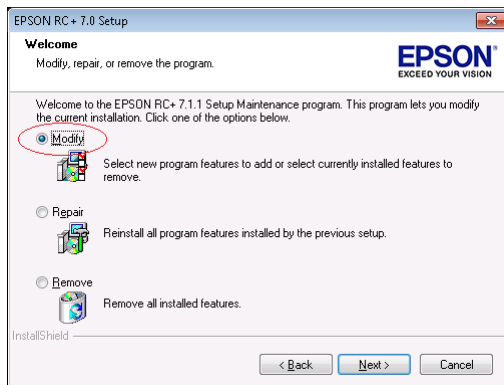
1. Start the EPSON RC+ 7.0 installer.
2. Select Modify, then click Next.



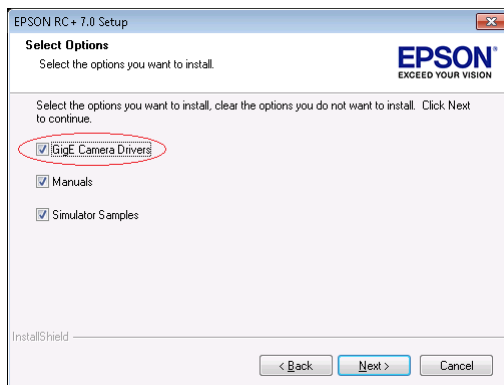
3. Uncheck GigE Camera Drivers and click Next.



4. Click Next and finish the installation.
5. Start the EPSON RC+ 7.0 installer.
6. Select Modify.



7. Check GigE Camera Drivers and click Next.



8. Click Next and finish the installation.