

EPSON RC+ 7.1.2 Release Notes

January 26, 2015

Thank you for using EPSON RC+ 7.1.2. This document contains the latest information for this release. Please read before using this software.

DOCUMENTATION	2
GETTING STARTED	2
WHAT'S NEW IN VERSION 7.1.2	2
WHAT'S FIXED IN VERSION 7.1.2	2
VISION GUIDE 7.0	2
TROUBLESHOOTING GIGE CAMERA DRIVER INSTALLATION.....	2

Documentation

All RC+ manuals are in PDF format and are installed on the PC hard disk. These manuals are accessible from the EPSON RC+ 7.0 environment Help menu.

Getting Started

Read the Getting Started chapter in the EPSON RC+ 7.0 User's Guide. This chapter will refer you to the RC700 Controller manual Installation chapter. This contains information for initial connections and start up.

What's New in version 7.1.2

1. Added support for RC700-A controller and RC700DU-A drive unit.
2. Added support for G-series and RS-series robots used with the RC700-A controller or RC700DU-A drive unit.
3. Added ExportPoints command to Spel+ language. Controller firmware v7.1.4.0 or greater is required to use this feature.
4. Added "Disable LJM in Teach Mode" controller preference. Controller firmware v7.1.4.0 or greater is required to use this feature.
5. Added "Use LJM" checkbox on Robot Manager Jog & Teach Execute Motion tab.
6. Added "Alive" remote input and output. Controller firmware v7.1.4.0 or greater is required to use this feature.

What's Fixed in version 7.1.2

General

1. Fixed a problem where the Project | Open dialog default drive was not the same drive as the current project.

GUI Builder

2. Fixed a problem where video was not displayed in a GUI Builder VideoBox after running the form the first time.

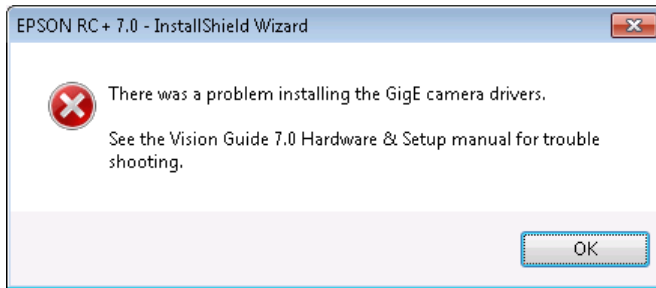
API

3. Fixed a problem where print events were not occurring during execution of the Call method.

Vision Guide 7.0

Troubleshooting GigE Camera Driver Installation

The following message may be displayed after the installation of EPSON RC+ 7.0 GigE camera drivers.

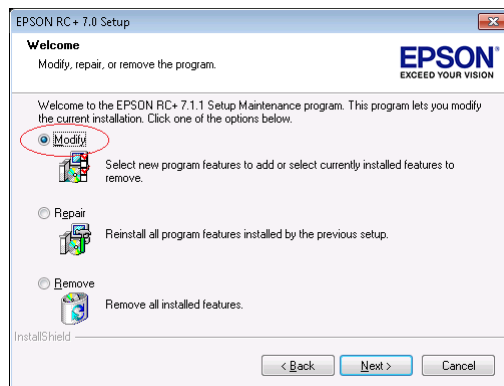


In this case, please refer to the following sections in the Vision Guide 7.0 Hardware & Setup manual:

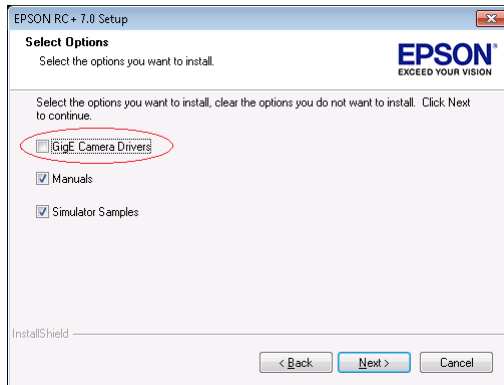
- Setup
 - 2 Software Configuration
 - 2.2 Network Configuration of Vision PC
 - 2.2.1 Network Driver Setting Confirmation
 - 2.2.2 Filter Driver Setting
 - 6 Trouble Shooting
 - “FilterDriver” Installation Error Occurred

After make the recommended changes, you will need to re-install the GigE camera drivers. Perform the following steps:

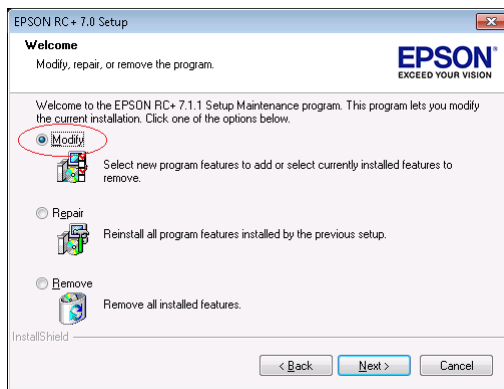
1. Start the EPSON RC+ 7.0 installer.
2. Select Modify, then click Next.



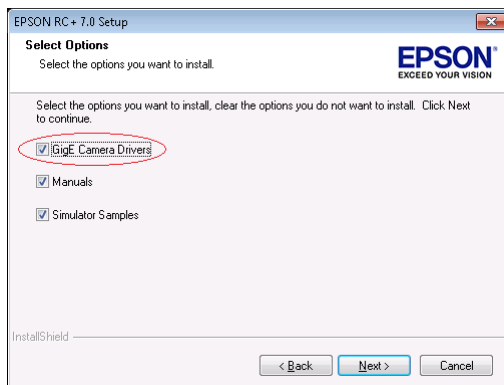
3. Uncheck GigE Camera Drivers and click Next.



4. Click Next and finish the installation.
5. Start the EPSON RC+ 7.0 installer.
6. Select Modify.



7. Check GigE Camera Drivers and click Next.



8. Click Next and finish the installation.